

Case Study

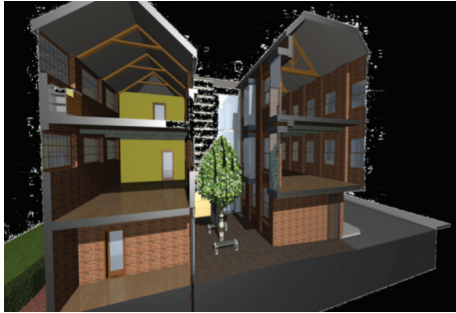
**Arts and Crafts Centre,
82 - 86 Rutland Street, Leicester**

EME
INSTALLATIONS

Brief Specification

On behalf of Leicester City Council we have been working from budget stage, through to tender and contract awarded status for a refurbishment of a derelict listed Grade II building in Leicester.

EME were responsible for the electrical and mechanical design incorporating feature lighting, LV distribution, Small power, Fire Alarms, Intruder Alarm, CCTV, Access control, CAT 5e IT, Emergency Lighting, new pump boiler plant, heating systems, public health, ventilation systems and BMS controls.



Project Type: Fixed price lump sum Design and Build
Mechanical and Electrical for Morgan Sindall Group PLC

Project Duration: Commenced May 2012,
completed November 2012

Project Value: £237,000

Contact details

Electrical & Mechanical Engineering
920d Melton Road
Thurmaston
Leicester LE4 8GR

Telephone
0116 260 6107

Fax
0116 260 7490

Email
enquiries@emeinstallations.co.uk

Web
www.emeinstallations.co.uk